



# 玄盛企業股份有限公司

專業製造 食品衛生級 不鏽鋼管、管件、閥、泵浦

CNC金屬加工、產業機械設備金屬零件代工製造



dun & bradstreet  
D-U-N-S® CERTIFIED  
65-736-5078

www.tech-control-tw.com

TECH CONTROL ENTERPRISE CO., LTD.

techcontrol@seed.net.tw

## ●不鏽鋼 食品衛生級 管接頭 及 墊片

管接頭 (管接環、夾盤、卡盤、夾接頭、夾接焊)、擴管接頭、軟管接頭、盲蓋、轉接頭

符合FDA要求之食品級衛生級配管用各式墊片 (Silicone, EPDM, Teflon, Viton, Buna-N)

## ●Stainless Steel Hygienic Tube Fittings, FERRULES

3A / IDF / Tri-Clamp Welding Ferrules, Roll-On Expanding Ferrules, Rubber Hose Adapters, End Caps, Adapters

Ferrule Gaskets Silicone, EPDM, Teflon, Viton, Buna-N

尺寸 Size : 1/2" 3/4" 7/8" X 1/2" 7/8" X 3/4" 1" 1.25" 1.5" 2" 2.5" 3" 4" 6" 8" 10" 12"

材質 Material : SS304, SS316, SS316L

型式 Type : Tri-Clamp Welding, Roll-On Expanding, I-LINE, Q-LINE, Hose Adapters, NPT/PT/PS Thread Adapters ... etc.

## 商品特點 Features :

材料為經過 Olympus Innov-X Delta XRF Metal Analyzer 金屬材質檢驗機 嚴格把關  
Materials are rigorously inspected by using the Olympus Innov-X Delta XRF Metal Analyzer

鍛造製法, 精密加工, 易於焊接  
Forging manufacturing method, precision machining, easy to weld

表面處理  $Ra \leq 32 \mu\text{inch}$  ( $0.8 \mu\text{m}$ ), 符合食品衛生級標準  
Surface treatment  $Ra \leq 32 \mu\text{inch}$  ( $0.8 \mu\text{m}$ ), compliant with food and hygiene standards

出貨前 100% 檢驗  
100% inspection before shipment



# CLAMP FERRULES

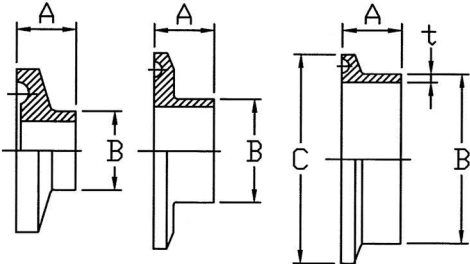
22055 新北市 板橋區 倉後街 24 號 1 樓 No.24, Tsang Hou St., BanQiao Dist., New Taipei City 22055, TAIWAN

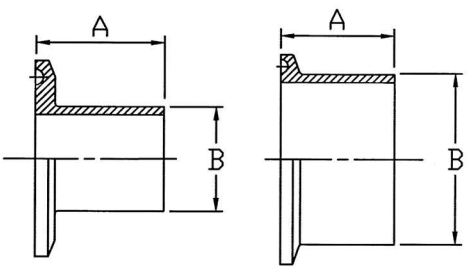
TEL: (02) 2968-5577 / 2967-5553 FAX: (02) 2967-5545 / 2968-9740

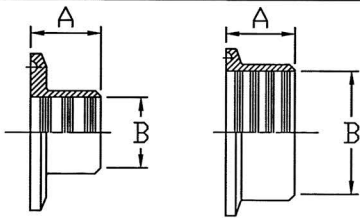
統一編號 : 22780634

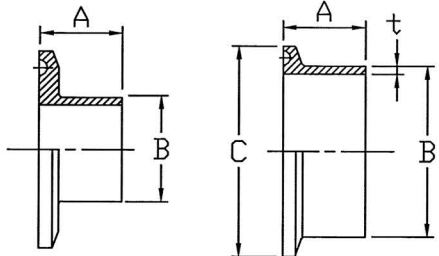
TECH CONTROL ENTERPRISE CO., LTD.

is a Member of TAITRA

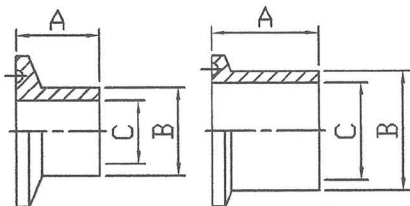
3A-14WMP 短接環		Welding Ferrule SHORT mm			
		SIZE	A	B	C t (thickness)
		1/2"	12.7	12.7	25.2 1.65
		3/4"	12.7	19.1	25.2 1.65
		7/8" X 1/2"	12.7	12.7	34 1.65
		7/8" X 3/4"	12.7	19.1	34 1.65
		1"	12.7	25.4	50.4 1.65
		1 1/4"	12.7	31.75	50.4 1.65
		1 1/2"	12.7	38.1	50.4 1.65
		2"	12.7	50.8	63.9 1.65
		2 1/2"	12.7	63.5	77.4 1.65
		3"	12.7	76.2	90.9 1.65
		4"	15.9	101.6	118.9 2.1
		6"	22.2	152.5	166.88 2.8
		8"	22.2	203.3	217.7 2.8
		10"	22.2	254.1	268.48 3.47
		12"	21.5	304.9	319.3 3.47

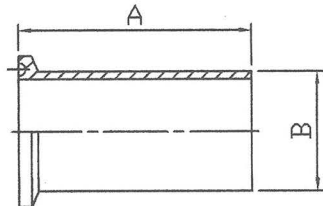
3A-14AMP 長接環		Welding Ferrule LONG / Tank Spud Light mm		t (thickness)
		SIZE	A B	
		1/2"	28.6 12.7	1.65
		3/4"	28.6 19.1	1.65
		1"	28.6 25.4	1.65
		1 1/4"	28.6 31.75	1.65
		1 1/2"	28.6 38.1	1.65
		2"	28.6 50.8	1.65
		2 1/2"	28.6 63.5	1.65
		3"	28.6 76.2	1.65
		4"	28.6 101.6	2.1
		6"	38.1 152.5	2.8

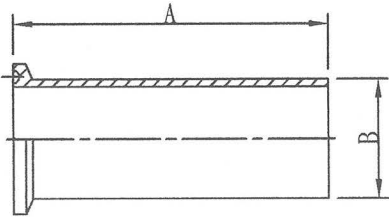
3A-14RMP 紋接環 (擴管接環)		Recessless / ROLL-ON Expanding Ferrule mm	
		SIZE	A B
		1"	19.1 25.5
		1 1/4"	28.6 31.9
		1 1/2"	28.6 38.2
		2"	33.3 50.9
		2 1/2"	34.9 63.6
		3"	36.5 76.3
		4"	38.1 101.7

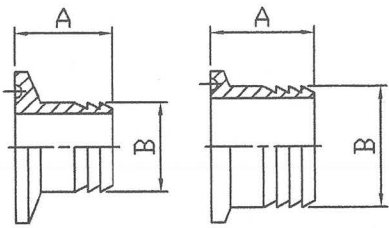
IDF-IDFA 中接環		Welding Ferrule MEDIUM mm			
		SIZE	A	B	C t (thickness)
		1"	21.5	25.4	50.4 1.2
		1 1/2"	21.5	38.1	50.4 1.2
		2"	21.5	50.8	63.9 1.5
		2 1/2"	21.5	63.5	77.4 2.0
		3"	21.5	76.2	90.9 2.0
		3 1/2"	21.5	89.1	106 2.0
		4"	28.0	101.6	118.9 2.0
		4 1/2"	21.5	114.3	130 3.0

\*\*\* Welding Ferrule MEDIUM IDF-IDFA for PIPE size OD(B) = 21.7, 27.2, 34, 48.6, 60.5 mm are available

3A-14MPW 加厚接環		Welding Ferrule TANK Spud HEAVY WALL mm				t (thickness)
		SIZE	A	B	C	
		1"	41.3	29.5	22.1	3.7
		1 1/2"	41.3	42.6	34.8	3.9
		2"	44.5	55.7	47.5	4.1
		2 1/2"	44.5	68.8	60.2	4.3
		3"	46.0	81.9	72.9	4.5
		4"	54.0	108.1	97.4	5.35

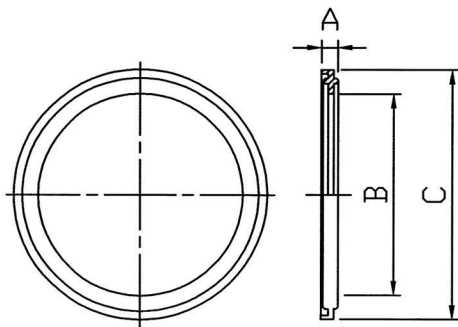
3A-14WLMP 加長接環		Welding Ferrule TANK Spud LIGHT mm			t (thickness)
		SIZE	A	B	
		1"	76.2	25.4	1.65
		1 1/2"	76.2	38.1	1.65
		2"	76.2	50.8	1.65
		2 1/2"	76.2	63.5	1.65
		3"	101.6	76.2	1.65
		4"	101.6	101.6	2.1
		6"	152.4	152.4	2.8

3A-14MPHT 特長接環(Tygon管接頭)		TYGON HOSE ADAPTER mm			t (thickness)
		SIZE	A	B	
		1"	114.3	25.4	1.65
		1 1/2"	114.3	38.1	1.65
		2"	114.3	50.8	1.65
		2 1/2"	114.3	63.5	1.65
		3"	114.3	76.2	1.65
		4"	117.5	101.6	2.1

3A-14MPHR 軟管接頭		RUBBER HOSE ADAPTER mm		
		SIZE	A	B
		1"	42.8	25.4
		1 1/2"	42.8	38.1
		2"	58.7	50.8
		2 1/2"	59.5	63.5
		3"	78.6	76.2
		4"	86.5	101.6
		6"	101.6	152.4



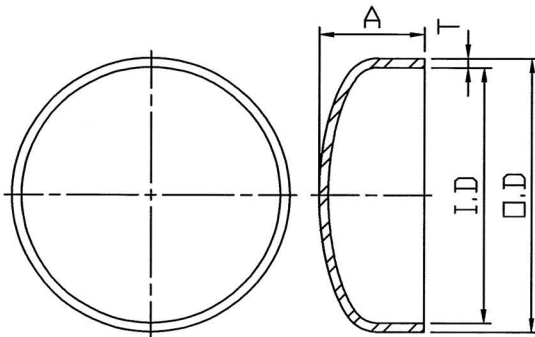
### 3A40B (夾接頭用) 有蓋墊片



#### Clamp Ferrule Gasket FLANGED mm

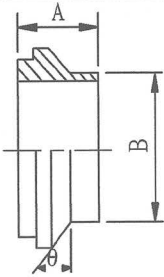
SIZE	A	B	C
1"	5.15	22.1	50.4
1 1/2"	5.15	34.8	50.4
2"	5.15	47.5	63.9
2 1/2"	5.15	60.2	77.4
3"	5.15	72.9	90.9
3 1/2"	5.15	85.1	106.0
4"	5.15	97.4	118.9
6"	5.15	146.9	166.88
12"	5.15	298.0	319.3

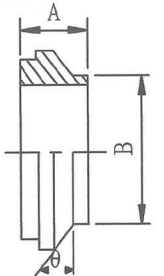
### 3A-16W (對焊用) 盲蓋

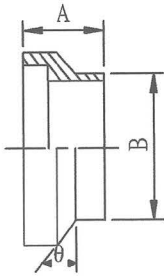


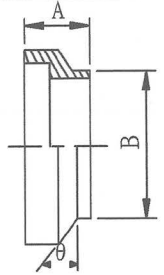
#### WELD Cap mm

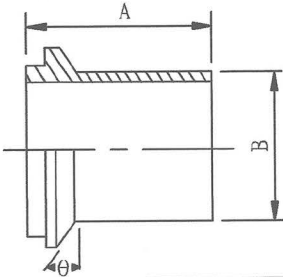
SIZE	O. D	I. D	t (thickness)	A
1"	25.4	22.1	1.65	9.53
1 1/2"	38.1	34.8	1.65	14.29
2"	50.8	47.5	1.65	19.05
2 1/2"	63.5	60.2	1.65	25.4
3"	76.2	72.9	1.65	31.75
4"	101.6	97.38	2.1	38.1

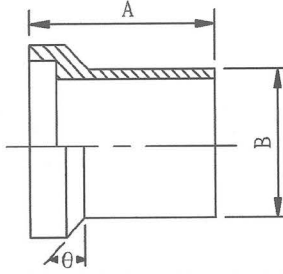
14WI-CB 公接環	I-LINE Welding Ferrule MALE (CB) mm			
	SIZE	A	B	$\theta$
	1"	19.8	25.65	37°
	1.5"	23.8	38.35	37°
	2"	26.2	51.05	37°
	2.5"	29.4	63.75	37°
	3"	30.9	76.45	37°
	4"	34.1	101.85	37°

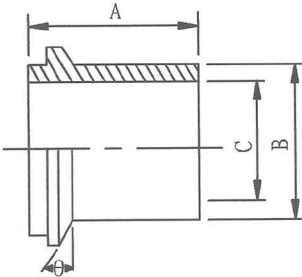
14WI 公接環, 短	I-LINE Welding Ferrule MALE, SHORT mm			
	SIZE	A	B	$\theta$
	1"	17.5	25.65	37°
	1.5"	15.6	38.35	37°
	2"	18.2	51.05	37°
	2.5"	21.4	63.75	37°
	3"	23	76.45	37°
	4"	25.4	101.85	37°
	6"	25.4	152.65	30°

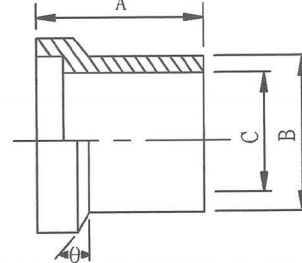
15WI-CB 母接環	I-LINE Welding Ferrule FEMALE (CB) mm			
	SIZE	A	B	$\theta$
	1"	19.8	25.65	37°
	1.5"	23.8	38.35	37°
	2"	26.2	51.05	37°
	2.5"	29.4	63.75	37°
	3"	30.9	76.45	37°
	4"	34.1	101.85	37°
	6"	28.6	152.65	30°

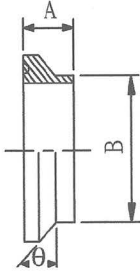
15WI 母接環, 短	I-LINE Welding Ferrule FEMALE, SHORT mm			
	SIZE	A	B	$\theta$
	1"	17.5	25.65	37°
	1.5"	15.8	38.35	37°
	2"	19.4	51.05	37°
	2.5	21.4	63.75	37°
	3"	23	76.45	37°
	4"	25.4	101.85	37°

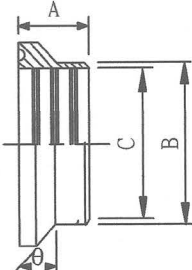
14WLI 公接環, 長	I-LINE Welding Ferrule MALE, LONG mm			
	SIZE	A	B	$\theta$
	1"	44.6	25.4	37°
	1.5"	51.8	38.1	37°
	2"	58.9	50.8	37°
	2.5"	63.4	63.5	37°
	3"	68.2	76.2	37°
	4"	76.1	101.6	37°

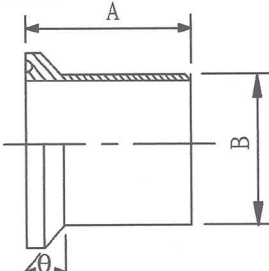
15WLI 母接環, 長	I-LINE Welding Ferrule FEMALE, LONG mm			
	SIZE	A	B	$\theta$
	1"	44.5	25.4	37°
	1.5"	51.6	38.1	37°
	2"	58.7	50.8	37°
	2.5"	63.5	63.5	37°
	3"	68.3	76.2	37°
	4"	76.2	101.6	37°

14WHI 加厚接環, 公	I-LINE Welding Ferrule MALE, HEAVY WALL mm				
	SIZE	A	B	C	$\theta$
	1"	38.1	31.8	22.1	37°
	1.5"	41.3	42.9	34.8	37°
	2"	44.5	57.2	47.5	37°
	2.5"	44.5	69.9	60.2	37°
	3"	46	84.1	72.9	37°
	4"	54	108	97.4	37°

15WHI 加厚接環, 母	I-LINE Welding Ferrule FEMALE, HEAVY WALL mm				
	SIZE	A	B	C	$\theta$
	1"	38.1	31.8	22.1	37°
	1.5"	41.3	42.9	34.8	37°
	2"	44.5	57.2	47.5	37°
	2.5"	44.5	69.9	60.2	37°
	3"	46	84.1	72.9	37°
	4"	54	108	97.4	37°

14WQ 短接環	Q-LINE Welding Ferrule SHORT mm			
	SIZE	A	B	$\theta$
	1"	13.5	25.7	37°
	1.5"	14.3	38.4	37°
	2"	20.6	51.1	37°
	2.5"	23.8	63.8	37°
	3"	23.8	76.5	37°
	4"	25.4	101.9	37°
	6"	28.6	152.7	30°

14RQ 短接環	Q-LINE ROLL-ON Union Ferrule mm				
	SIZE	A	B	C	$\theta$
	1"	17.5	29.5	25.5	37°
	1.5"	17.5	42.6	38.2	37°
	2"	22.2	55.7	50.9	37°
	2.5"	25.4	69.9	63.6	37°
	3"	25.4	82.6	76.3	37°
	4"	25.4	108	101.7	37°

14WLQ 長接環	Q-LINE Welding Ferrule LONG, LIGHT WALL mm			
	SIZE	A	B	$\theta$
	1"	44.5	25.4	37°
	1.5"	51.6	38.1	37°
	2"	58.7	50.8	37°
	2.5"	63.5	63.5	37°
	3"	68.3	76.2	37°
	4"	76.2	101.6	37°

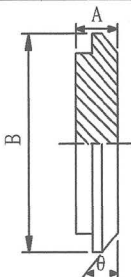


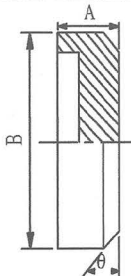
14RI 擴管紋接環, 公	I-LINE ROLL-ON Union Ferrule, MALE mm				
	SIZE	A	B	C	$\theta$
	1"	25.4	29.5	25.5	37°
	1.5"	20.6	42.6	38.2	37°
	2"	25.4	55.7	50.9	37°
	2.5"	25.4	69.9	63.6	37°
	3"	25.4	82.6	76.3	37°
	4"	25.4	108	101.7	37°

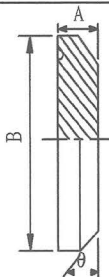
15RI 擴管紋接環, 母	I-LINE ROLL-ON Union Ferrule, FEMALE mm				
	SIZE	A	B	C	$\theta$
	1"	26.2	29.5	25.5	37°
	1.5"	27	42.6	38.2	37°
	2"	33.3	55.7	50.9	37°
	2.5"	34.9	69.9	63.6	37°
	3"	34.9	82.6	76.3	37°
	4"	34.9	108	101.7	37°

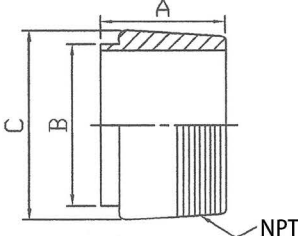
14WI-5 公接環 IPS SCH.5	I-LINE Welding Ferrule MALE, SCH.5 mm				
	SIZE	A	B	C	$\theta$
	1"	19.8	33.5	30.1	37°
	1.5"	23.8	48.4	45	37°
	2"	28.6	60.5	57	37°
	2.5"	29.4	73.2	68.8	37°
	3"	33.3	89	84.7	37°
	4"	34.1	114.4	110.1	37°

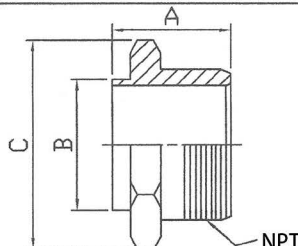
15WI-5 母接環 IPS SCH.5	I-LINE Welding Ferrule FEMALE, SCH.5 mm				
	SIZE	A	B	C	$\theta$
	1"	19.8	33.5	30.1	37°
	1.5"	23.8	48.4	45	37°
	2"	28.6	60.5	57	37°
	2.5"	29.4	73.2	68.8	37°
	3"	33.3	89	84.7	37°
	4"	34.1	114.4	110.1	37°

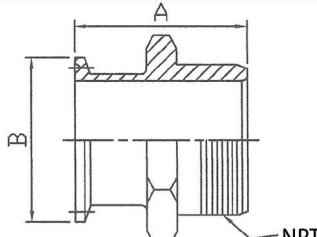
16AI-14I 盲蓋, 公	I-LINE Cap, MALE				mm
	SIZE	A	B	$\theta$	
	1"	12.7	50.7	37°	
	1.5"	12.7	50.7	37°	
	2"	12.7	67.1	37°	
	2.5"	17.5	84	37°	
	3"	17.5	98.3	37°	
	4"	19.1	123.7	37°	
	6"	19.1	190.4	30°	

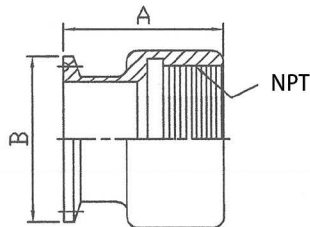
16AI-15I 盲蓋, 母	I-LINE Cap, FEMALE				mm
	SIZE	A	B	$\theta$	
	1"	12.7	50.7	37°	
	1.5"	12.7	50.7	37°	
	2"	17.5	67.1	37°	
	2.5"	17.5	84	37°	
	3"	17.5	98.3	37°	
	4"	19.1	123.7	37°	
	6"	22.2	190.4	30°	

16AQ-14Q 盲蓋	Q-LINE Cap				mm
	SIZE	A	B	$\theta$	
	1"	7.9	50.4	37°	
	1.5"	7.9	50.4	37°	
	2"	11.1	67.1	37°	
	2.5"	12.7	84	37°	
	3"	12.7	98.3	37°	
	4"	15.9	123.7	37°	

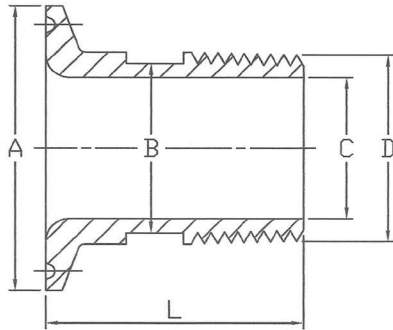
B19W 焊-NPT外牙 轉接頭		MNPT to Weld Adapter mm			
		SIZE	A	B	C Threads/Inch
		1/2"	38.1	12.7	21.3 14
		3/4"	41.3	19.1	26.7 14
		1"	44.5	25.4	33.4 11-1/2
		1.5"	44.5	38.1	50.6 11-1/2
		2"	46	50.8	60.3 11-1/2
		2.5"	58.7	63.5	73 8
		3"	63.5	76.2	88.9 8
		4"	65.1	101.6	114.3 8

21-1 焊-NPT外牙 轉接頭 (自帶六角鑲母)		MNPT to Weld Adapter (with HEX NUT) mm			
		SIZE	A	B	C Threads/Inch
		1"	44.5	25.5	46 11-1/2
		1.5"	49.2	38.2	61.1 11-1/2
		2"	54.8	50.9	76.2 11-1/2
		2.5"	70.6	63.6	91.3 8
		3"	76.2	76.3	106.4 8
		4"	81	101.7	137.6 8

21MP NPT外牙接頭 (夾盤-NPT外牙 轉接頭)		Tri-Clamp Ferrule X MNPT Adapter mm		
		SIZE	A	B Threads/Inch
		1"	57.2	50.4 11-1/2
		1.5"	61.9	50.4 11-1/2
		2"	67.5	63.9 11-1/2
		2.5"	83.3	77.4 8
		3"	88.9	90.9 8
		4"	96.8	118.9 8

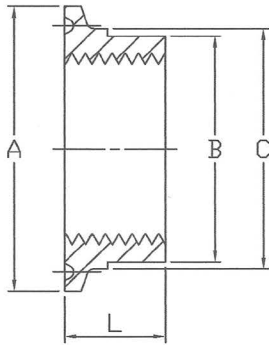
22MP NPT內牙接頭 (夾盤-NPT內牙 轉接頭)		Tri-Clamp Ferrule X FNPT Adapter mm		
		SIZE	A	B Threads/Inch
		1"	47.63	50.4 11-1/2
		1.5"	48.41	50.4 11-1/2
		2"	49.20	63.9 11-1/2
		2.5"	57.15	77.4 8
		3"	60.33	90.9 8
		4"	61.9	118.9 8

**PT外牙接頭** (夾盤-PT外牙 轉接頭)  
Tri-Clamp Ferrule X Male PT Adapter

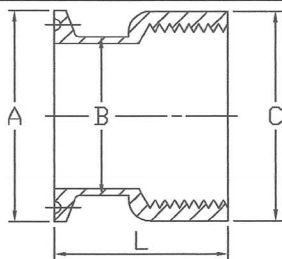


SIZE	A	B	C	D	L
3/4" x PT 1/8"	25.2	17	5	PT 1/8" (10.5)	30
3/4" x PT 1/4"	25.2	17	9	PT 1/4" (13.8)	30
3/4" x PT 3/8"	25.2	17	10	PT 3/8" (17.3)	30
3/4" x PT 1/2"	25.2	19	16	PT 1/2" (21.7)	40
3/4" x PT 3/4"	25.2	19	16	PT 3/4" (27.2)	40
1 1/2" x PT 1/8"	50.4	22	5	PT 1/8" (10.5)	30
1 1/2" x PT 1/4"	50.4	22	7	PT 1/4" (13.8)	30
1 1/2" x PT 3/8"	50.4	22	10	PT 3/8" (17.3)	30
1 1/2" x PT 1/2"	50.4	22	17	PT 1/2" (21.7)	45
1 1/2" x PT 3/4"	50.4	25	22.1	PT 3/4" (27.2)	45
1 1/2" x PT 1"	50.4	30	25	PT 1" (34.0)	45
1 1/2" x PT 1 1/4"	50.4	42.8	34.8	PT 1 1/4" (42.7)	45
1 1/2" x PT 1 1/2"	50.4		41.9	PT 1 1/2" (48.6)	50
2" x PT 1 1/2"	63.9		42	PT 1 1/2" (48.6)	50
2 1/2" x PT 2"	77.4	50	50	PT 2" (60.5)	50
3" x PT 2 1/2"	90.9		69	PT 2 1/2" (76.3)	50
3 1/2" x PT 3"	106.0		80	PT 3" (89.1)	50

**PS内牙接頭** (夾盤-PS内牙 轉接頭)  
Tri-Clamp Ferrule X Female PS Adapter

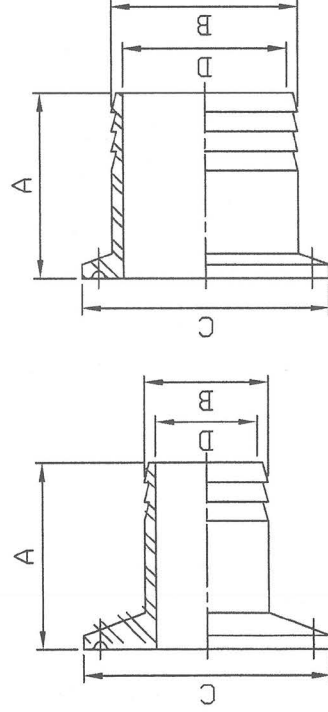


SIZE	A	B	C	L
3/4" x PS 1/4"	25.2	17	19.05	12.7
1 1/2" x PS 1/4"	50.4	40	42.6	17.5
1 1/2" x PS 3/8"	50.4	40	42.6	17.5
1 1/2" x PS 1/2"	50.4	40	42.6	17.5
1 1/2" x PS 3/4"	50.4	40	42.6	17.5
1 1/2" x PS 1"	50.4	40	42.6	17.5
2" x PS 1 1/4"	63.9	55.7	55.7	17.5
2" x PS 1 1/2"	63.9		55.7	17.5
2 1/2" x PS 2"	77.4		68.8	17.5
3" x PS 2 1/2"	90.9	81.9	81.9	17.5
4" x PS 3"	118.9		108.1	17.5



SIZE	A	B	C	L
3/4" x PS 3/8"	25.2	19.05	26	35
3/4" x PS 1/2"	25.2	19.05	26	35
1 1/2" x PS 1 1/4"	50.4	42.8	50	41
1 1/2" x PS 1 1/2"	50.4	42.8	54	41

# 3A-14MPHR Fractional Size 特殊軟管接頭



Rubber Hose Adapter		"Fractional Size" mm		
SIZE	A	B	D	C
$\frac{3}{4}" \times \frac{1}{4}"$	38.1	7.93	5.46	25.2
$\frac{3}{4}" \times \frac{3}{8}"$	38.1	10.29	6.99	25.2
$\frac{1}{2}"$	38.1	12.7	9.40	25.2
$\frac{3}{4}"$	38.1	19.05	15.75	25.2
$1\frac{1}{2}" \times \frac{1}{4}"$	38.1	7.93	5.46	50.5
$1\frac{1}{2}" \times \frac{3}{8}"$	38.1	10.29	6.99	50.5
$1\frac{1}{2}" \times \frac{1}{2}"$	38.1	12.7	9.40	50.5
$1\frac{1}{2}" \times \frac{3}{4}"$	38.1	19.05	15.75	50.5
$1\frac{1}{2}" \times \frac{3}{4}"$ (Aseptek)	38.1	21.3	15.8	50.5
$1\frac{1}{2}" \times 14.5\text{mm}$	38.1	14.5	11.2	50.5
$1\frac{1}{2}" \times 22\text{mm}$	38.1	22	18.7	50.5
$1\frac{1}{2}" \times 26\text{mm}$	38.1	26	22.7	50.5





# 玄盛企業股份有限公司

專業製造 食品衛生級 不鏽鋼管、管件、閥、泵浦  
CNC金屬加工、產業機械設備金屬零件代工製造



dun & bradstreet  
D-U-N-S® CERTIFIED  
65-736-5078

www.tech-control-tw.com

TECH CONTROL ENTERPRISE CO., LTD.

techcontrol@seed.net.tw

- 不鏽鋼 食品衛生級 夾接管件、對焊管件、擴管管件 3A、IDF、RJT/BSM/CIP Flat Face、DIN 11851、SMS Tri-Clamp / Bevel Seat / Butt Weld / Roll-On Expanding HYGIENIC TUBE FITTINGS



Tri-Clamp接頭/夾盤(Ferrule)、盲蓋(Blank)  
管夾/夾帶/卡箍(Clamp)、軟管接頭(Hose Barb)  
45°、90° 彎頭(Elbow)、大小頭(Reducer)  
三通(Tee)、平口三通、十字通(Cross)  
管架/管束(Support & Hanger)、食品級墊片  
Silicone、EPDM、Viton、Teflon、Buna-N

Strainer & Filter 過濾器

Sight Glass 玻璃視窗

Sight Liquid Level Gauge 液位計

Sampling Valve 取樣閥

CIP Cleaning Spray Ball CIP清洗球

Rotary Spray Ball 旋轉噴球



- 不鏽鋼 食品衛生級 手動/氣動 各式閥件 Manual / Pneumatic HYGIENIC VALVES

蝶閥(Butterfly Valve)、考克閥(Plug Valve)、逆止閥(Check Valve)、球閥(Ball Valve)、座閥(Seat Valve)  
換向閥(Divert Valve)、截止閥(Shut-Off Valve)、隔膜閥(Diaphragm Valve)、桶底閥(Tank Flush Valve)

接口: 3A Tri-Clamp夾式(Ferrule Ends)、焊式(Weld Ends)、IDF、RJT/BSM/CIP Flat Face、DIN 11851、SMS

尺寸: 1"、1.5"、2"、2.5"、3"、4"

耐壓: 水壓 10 kg/cm<sup>2</sup> (142 psi at 30° C / 86° F)



- 不鏽鋼 食品衛生級 離心式泵浦 CIP HYGIENIC CENTRIFUGAL PUMPS
- 不鏽鋼管 HYGIENIC TUBES ASTM A270

- 產業機械設備金屬零件代工製造 OEM / CUSTOM METAL PARTS for Machinery & Equipment



22055 新北市 板橋區 倉後街 24 號 1 樓 No.24, Tsang Hou St., BanQiao Dist., New Taipei City 22055, TAIWAN  
TEL: (02) 2968-5577 / 2967-5553 FAX: (02) 2967-5545 / 2968-9740

統一編號: 22780634

TECH CONTROL ENTERPRISE CO., LTD.  
is a Member of TAITRA