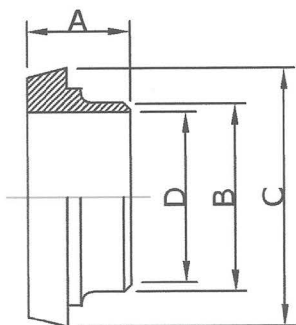
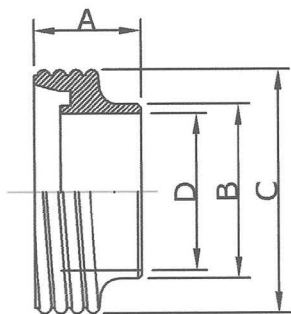


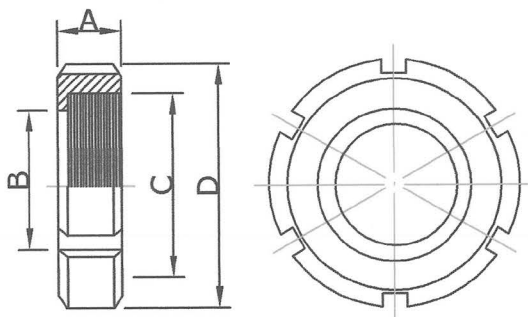
DIN14 焊無牙接頭	Weld LINER (DIN 11851)				mm
	SIZE	A	B	C	D
	10	17.0	15.0	22.0	10.0
	15	17.0	21.0	28.0	16.0
	20	18.0	25.0	36.0	20.0
	25	22.0	31.0	44.0	26.0
	32	25.0	37.0	50.0	32.0
	40	26.0	43.0	56.0	38.0
	50	28.0	55.0	68.0	50.0
	65	32.0	72.0	86.0	66.0
	80	37.0	87.0	100.0	81.0
	100	44.0	106.0	120.0	100.0
	125	34.0	132.0	149.0	125.0
	150	37.0	157.0	175.0	150.0



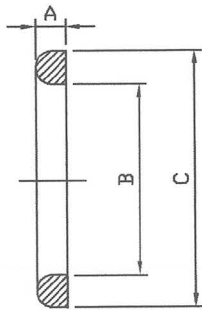
DIN15 焊外牙接頭	Weld MALE (DIN 11851)				mm
	SIZE	A	B	C	D
	10	21.0	15.0	28X1/8"	10.0
	15	21.0	21.0	34X1/8"	16.0
	20	24.0	25.0	44X1/6"	20.0
	25	29.0	31.0	52X1/6"	26.0
	32	32.0	37.0	58X1/6"	32.0
	40	33.0	43.0	65X1/6"	38.0
	50	35.0	55.0	78X1/6"	50.0
	65	40.0	72.0	95X1/6"	66.0
	80	45.0	87.0	110X1/4"	81.0
	100	54.0	106.0	130X1/4"	100.0
	125	46.0	132.0	160X1/4"	125.0
	150	50.0	157.0	190X1/4"	150.0



DIN13R 圓螺母(母牙/內牙)	ROUND SLOTTED NUT (DIN 11851)mm				
	SIZE	A	B	C	D
	10	18.0	19.0	28X1/8"	38.0
	15	18.0	25.0	34X1/8"	44.0
	20	21.0	31.0	44X1/6"	54.0
	25	21.0	36.0	52X1/6"	63.0
	32	21.0	42.0	58X1/6"	70.0
	40	21.0	49.0	65X1/6"	78.0
	50	22.0	62.0	78X1/6"	92.0
	65	25.0	80.0	95X1/6"	112.0
	80	30.0	94.0	110X1/4"	127.0
	100	31.0	115.0	130X1/4"	148.0
	125	35.0	138.0	160X1/4"	178.0
	150	40.0	164.0	190X1/4"	210.0



DIN40 DIN垫片

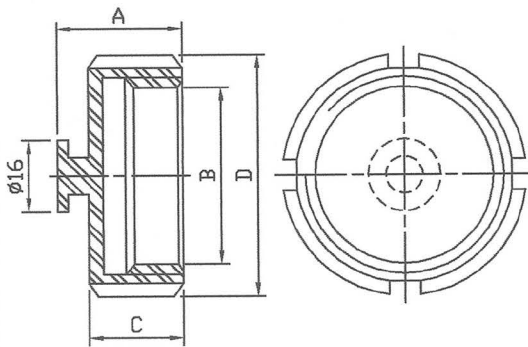


DIN GASKET (DIN 11851)

mm

SIZE	A	B	C
10	5.0	12.0	20.0
15	5.0	18.0	26.0
20	5.0	23.0	33.0
25	5.0	30.0	40.0
40	5.0	42.0	52.0
50	5.0	54.0	64.0
65	5.0	71.0	81.0
80	5.0	85.0	95.0
100	6.0	104.0	114.0
125	6.0	130.0	142.0
150	6.0	155.0	167.0

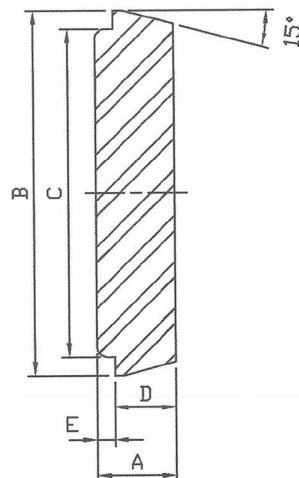
DIN13AH 盲螺帽 (母牙/内牙)



ROUND BLANK NUT (DIN 11851) mm

SIZE	A	B	C	D	SLOT
10	25	25.2	18	38	4
15	25	31.2	18	44	4
20	28	40.3	21	54	4
25	28	48.3	21	63	4
32	28	54.3	21	70	4
40	28	61.3	21	78	4
50	29	74.3	22	92	4
65	32	91.3	25	112	6
80	37	105	30	127	6
90	37	115	30	138	6
100	38	125	31	148	6
125	42	155	35	178	6
150	47	185	40	210	6

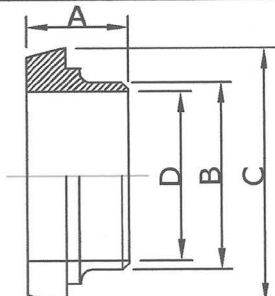
DIN16A DIN盲盖

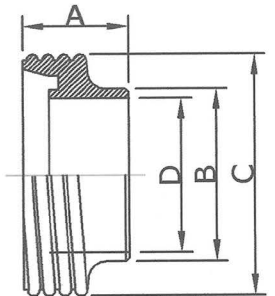


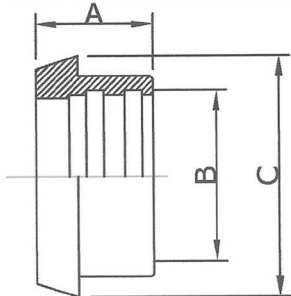
BLANK LINER (DIN 11851)

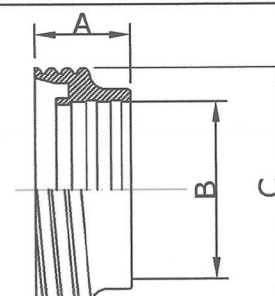
mm

SIZE	A	B	C	D	E
10	9	22	18	6	3
15	9	28	24	6	3
20	11	36	30	8	3
25	13	44	35	10	3
32	13	50	41	10	3
40	13	56	48	10	3
50	14	68	61	11	3
65	16	86	79	12	4
80	16	100	93	12	4
100	20	120	114	15	5
125	22	149	137	17	5
150	24	175	163	18	6

DIN14EB (英制) 焊無牙接頭	IMPERIAL Weld LINER (DIN 11851) mm				
	SIZE	A	B	C	D
	1"	22.0	25.4	44.0	22.0
	1.5"	26.0	38.1	56.0	34.8
	2"	28.0	50.8	68.0	47.5
	2.5"	32.0	63.5	86.0	60.2
	3"	37.0	76.2	100.0	72.9
	4"	44.0	101.6	120.0	97.4

DIN15EB (英制) 焊外牙接頭	IMPERIAL Weld MALE (DIN 11851) mm				
	SIZE	A	B	C	D
	1"	29.0	25.4	52X1/6"	22.0
	1.5"	33.0	38.1	65X1/6"	34.8
	2"	35.0	50.8	78X1/6"	47.5
	2.5"	40.0	63.5	95X1/6"	60.2
	3"	45.0	76.2	110X1/4"	72.9
	4"	54.0	101.6	130X1/4"	97.4

DIN14R 擴管無牙接頭	LINER for EXPANDING (DIN 11851) mm			
	SIZE	A	B	C
	25	22.0	28.2	44.0
	40	26.0	40.2	56.0
	50	28.0	52.2	68.5
	65	32.0	70.3	86.0
	80	37.0	85.3	100.0
	100	44.0	104.3	121.0

DIN15R 擴管外牙接頭	MALE for EXPANDING (DIN 11851) mm			
	SIZE	A	B	C
	25	29.0	28.2	52X1/6"
	40	33.0	40.2	65X1/6"
	50	35.0	52.2	78X1/6"
	65	40.0	70.3	95X1/6"
	80	45.0	85.3	110X1/4"
	100	54.0	104.3	130X1/4"

玄盛企業股份有限公司
 食品衛生級 不鏽鋼管及管件
 外徑及厚度比較表
 " Outer Diameter & Wall Thickness of the Hygienic Tubings "
 - TECH CONTROL ENTERPRISE CO., LTD.

3A			IDF			RJT/ BSM/ CIP Flat Face			DIN 11851			SMS		
尺寸 SIZE	外徑 OD (mm)	厚度 T (mm)	尺寸 SIZE	外徑 OD (mm)	厚度 T (mm)	尺寸 SIZE	外徑 OD (mm)	厚度 T (mm)	尺寸 SIZE	外徑 OD (mm)	厚度 T (mm)	尺寸 SIZE	外徑 OD (mm)	厚度 T (mm)
1/2"	12.7	1.65							10	15.0	2.5			
3/4"	19.05	1.65							15	21.0	2.5			
1"	25.4	1.65	1"	25.4	1.2	1"	25.8	1.8	20	25.0	2.5	1"	25.0	1.25
1.25"	31.75	1.65							25	31.0	2.5			
1.5"	38.1	1.65	1.5"	38.1	1.2	1.5"	38.5	1.8	32	37.0	2.5	1.5"	38.0	1.25
									40	43.0	2.5			
2"	50.8	1.65	2"	50.8	1.5	2"	51.2	1.8	50	55.0	2.5	2"	51.0	1.25
2.5"	63.5	1.65	2.5"	63.5	2.0	2.5"	63.9	1.8	65	72.0	3.0	2.5"	63.5	1.5
3"	76.2	1.65	3"	76.2	2.0	3"	76.6	1.8				3"	76.1	1.6
			3.5"	89.1	2.0				80	87.0	3.0			
4"	101.6	2.1	4"	101.6	2.0	4"	102.0	2.2	100	106.0	3.0	4" / 4"EB	101.6 / 104	2.0 / 2.0
			4.5"	114.3	3.0									
									125	132.0	3.5			
6"	152.4	2.8				6"	152.8	2.2	150	157.0	3.5			
8"	203.2	2.8												
10"	254.0	3.47												
12"	304.8	3.47												

表面處理參考表

Surface Finish Cross Reference		
Grit No.	Ra (µin.)	Ra (µm)
120		
180	32	0.8
240	25	0.6
320	20	0.5

玄盛企業股份有限公司 食品衛生級 墊片材料特性 比較表

" Gasket Material Selection Guide / Gasket Material Characteristics Comparison Chart " - TECH CONTROL ENTERPRISE CO., LTD.

墊片材料特性 Gasket Material Characteristics	SILICONE	EPDM	VITON (FKM)	TEFLON (PTFE)	BUNA-N
建議操作溫度 Recommend Operating Temperature	-30°C~120°C	-30°C~100°C	-15°C~120°C	-30°C~160°C	-10°C~100°C
耐酸鹼度 Acid/Alkali Resistance	一般 Fair	一般 Fair	良 Good	優 Excellent	一般 Fair
耐臭氧度 Ozone Resistance	一般 Fair	優 Excellent	一般 Fair	一般 Fair	差 Poor
顏色 Color	白色半透明 Translucent White	黑 Black	黑 Black	白 White	原色為淺褐色, 可訂製為白色 Original color is light brown, customizable to white
其它備註事項 Other Comments	耐高溫 heat resistant	耐臭氧 Ozone resistance	耐酒精 alcohol resistance	耐酸鹼及溶劑 acid, alkali, and solvent resistant, 硬 hard	耐油 oil resistance



玄盛企業股份有限公司

專業製造 食品衛生級 不鏽鋼管、管件、閥、泵浦
CNC金屬加工、產業機械設備金屬零件代工製造



dun & bradstreet
D-U-N-S® CERTIFIED
65-736-5078

www.tech-control-tw.com

TECH CONTROL ENTERPRISE CO., LTD.

techcontrol@seed.net.tw

●不鏽鋼 食品衛生級 夾接管件、對焊管件、擴管管件 3A、IDF、RJT/BSM/CIP Flat Face、DIN 11851、SMS
Tri-Clamp / Bevel Seat / Butt Weld / Roll-On Expanding HYGIENIC TUBE FITTINGS



Tri-Clamp接頭/夾盤(Ferrule)、盲蓋(Blank)
管夾/夾帶/卡箍(Clamp)、軟管接頭(Hose Barb)
45°、90° 彎頭(Elbow)、大小頭(Reducer)
三通(Tee)、平口三通、十字通(Cross)
管架/管束(Support & Hanger)、食品級墊片
Silicone、EPDM、Viton、Teflon、Buna-N

Strainer & Filter 過濾器

Sight Glass 玻璃視窗

Sight Liquid Level Gauge 液位計

Sampling Valve 取樣閥

CIP Cleaning Spray Ball CIP清洗球

Rotary Spray Ball 旋轉噴球



●不鏽鋼 食品衛生級 手動/氣動 各式閥件 Manual / Pneumatic HYGIENIC VALVES

蝶閥(Butterfly Valve)、考克閥(Plug Valve)、逆止閥(Check Valve)、球閥(Ball Valve)、座閥(Seat Valve)
換向閥(Divert Valve)、截止閥(Shut-Off Valve)、隔膜閥(Diaphragm Valve)、桶底閥(Tank Flush Valve)

接口: 3A Tri-Clamp夾式(Ferrule Ends)、焊式(Weld Ends)、IDF、RJT/BSM/CIP Flat Face、DIN 11851、SMS

尺寸: 1"、1.5"、2"、2.5"、3"、4"

耐壓: 水壓 10 kg/cm² (142 psi at 30° C / 86° F)



●不鏽鋼 食品衛生級 離心式泵浦 CIP HYGIENIC CENTRIFUGAL PUMPS ●不鏽鋼管 HYGIENIC TUBES ASTM A270

●產業機械設備金屬零件代工製造 OEM / CUSTOM METAL PARTS for Machinery & Equipment



22055 新北市 板橋區 會後街 24 號 1 樓 No.24, Tsang Hou St., BanQiao Dist., New Taipei City 22055, TAIWAN
TEL: (02) 2968-5577 / 2967-5553 FAX: (02) 2967-5545 / 2968-9740

統一編號: 22780634

TECH CONTROL ENTERPRISE CO., LTD.
is a Member of TAITRA