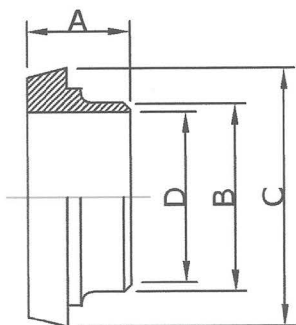
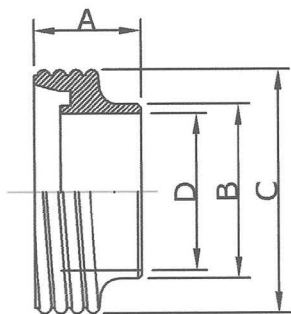


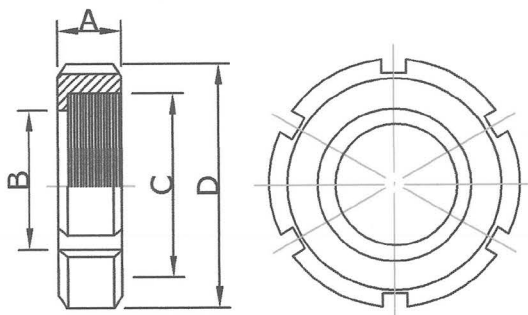
| DIN14 焊無牙接頭 | Weld LINER (DIN 11851) | | | | mm |
|-------------|------------------------|------|-------|-------|-------|
| | SIZE | A | B | C | D |
| | 10 | 17.0 | 15.0 | 22.0 | 10.0 |
| | 15 | 17.0 | 21.0 | 28.0 | 16.0 |
| | 20 | 18.0 | 25.0 | 36.0 | 20.0 |
| | 25 | 22.0 | 31.0 | 44.0 | 26.0 |
| | 32 | 25.0 | 37.0 | 50.0 | 32.0 |
| | 40 | 26.0 | 43.0 | 56.0 | 38.0 |
| | 50 | 28.0 | 55.0 | 68.0 | 50.0 |
| | 65 | 32.0 | 72.0 | 86.0 | 66.0 |
| | 80 | 37.0 | 87.0 | 100.0 | 81.0 |
| | 100 | 44.0 | 106.0 | 120.0 | 100.0 |
| | 125 | 34.0 | 132.0 | 149.0 | 125.0 |
| | 150 | 37.0 | 157.0 | 175.0 | 150.0 |

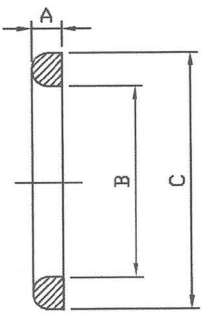


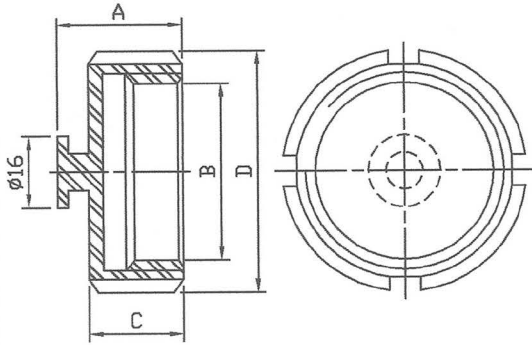
| DIN15 焊外牙接頭 | Weld MALE (DIN 11851) | | | | mm |
|-------------|-----------------------|------|-------|----------|-------|
| | SIZE | A | B | C | D |
| | 10 | 21.0 | 15.0 | 28X1/8" | 10.0 |
| | 15 | 21.0 | 21.0 | 34X1/8" | 16.0 |
| | 20 | 24.0 | 25.0 | 44X1/6" | 20.0 |
| | 25 | 29.0 | 31.0 | 52X1/6" | 26.0 |
| | 32 | 32.0 | 37.0 | 58X1/6" | 32.0 |
| | 40 | 33.0 | 43.0 | 65X1/6" | 38.0 |
| | 50 | 35.0 | 55.0 | 78X1/6" | 50.0 |
| | 65 | 40.0 | 72.0 | 95X1/6" | 66.0 |
| | 80 | 45.0 | 87.0 | 110X1/4" | 81.0 |
| | 100 | 54.0 | 106.0 | 130X1/4" | 100.0 |
| | 125 | 46.0 | 132.0 | 160X1/4" | 125.0 |
| | 150 | 50.0 | 157.0 | 190X1/4" | 150.0 |

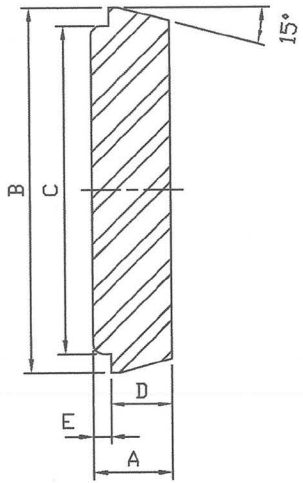


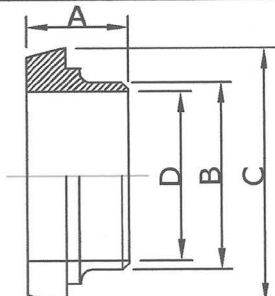
| DIN13R 圓螺母(母牙/內牙) | ROUND SLOTTED NUT (DIN 11851)mm | | | | |
|-------------------|---------------------------------|------|-------|----------|-------|
| | SIZE | A | B | C | D |
| | 10 | 18.0 | 19.0 | 28X1/8" | 38.0 |
| | 15 | 18.0 | 25.0 | 34X1/8" | 44.0 |
| | 20 | 21.0 | 31.0 | 44X1/6" | 54.0 |
| | 25 | 21.0 | 36.0 | 52X1/6" | 63.0 |
| | 32 | 21.0 | 42.0 | 58X1/6" | 70.0 |
| | 40 | 21.0 | 49.0 | 65X1/6" | 78.0 |
| | 50 | 22.0 | 62.0 | 78X1/6" | 92.0 |
| | 65 | 25.0 | 80.0 | 95X1/6" | 112.0 |
| | 80 | 30.0 | 94.0 | 110X1/4" | 127.0 |
| | 100 | 31.0 | 115.0 | 130X1/4" | 148.0 |
| | 125 | 35.0 | 138.0 | 160X1/4" | 178.0 |
| | 150 | 40.0 | 164.0 | 190X1/4" | 210.0 |

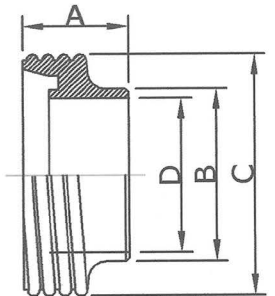


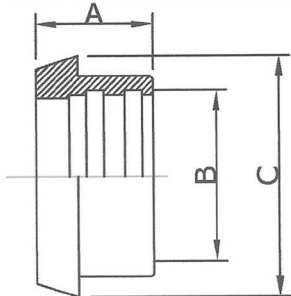
| DIN40 DIN垫片 | DIN GASKET (DIN 11851) mm | | | |
|---|---------------------------|-----|-------|-------|
| | SIZE | A | B | C |
|  | 10 | 5.0 | 12.0 | 20.0 |
| | 15 | 5.0 | 18.0 | 26.0 |
| | 20 | 5.0 | 23.0 | 33.0 |
| | 25 | 5.0 | 30.0 | 40.0 |
| | 40 | 5.0 | 42.0 | 52.0 |
| | 50 | 5.0 | 54.0 | 64.0 |
| | 65 | 5.0 | 71.0 | 81.0 |
| | 80 | 5.0 | 85.0 | 95.0 |
| | 100 | 6.0 | 104.0 | 114.0 |
| | 125 | 6.0 | 130.0 | 142.0 |
| | 150 | 6.0 | 155.0 | 167.0 |

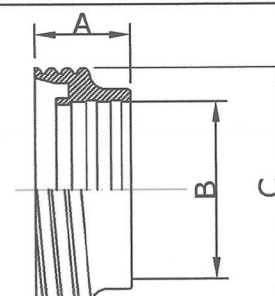
| DIN13AH 盲螺帽 (母牙/内牙) | ROUND BLANK NUT (DIN 11851) mm | | | | | |
|--|--------------------------------|----|------|----|-----|------|
| | SIZE | A | B | C | D | SLØT |
|  | 10 | 25 | 25.2 | 18 | 38 | 4 |
| | 15 | 25 | 31.2 | 18 | 44 | 4 |
| | 20 | 28 | 40.3 | 21 | 54 | 4 |
| | 25 | 28 | 48.3 | 21 | 63 | 4 |
| | 32 | 28 | 54.3 | 21 | 70 | 4 |
| | 40 | 28 | 61.3 | 21 | 78 | 4 |
| | 50 | 29 | 74.3 | 22 | 92 | 4 |
| | 65 | 32 | 91.3 | 25 | 112 | 6 |
| | 80 | 37 | 105 | 30 | 127 | 6 |
| | 90 | 37 | 115 | 30 | 138 | 6 |
| | 100 | 38 | 125 | 31 | 148 | 6 |
| | 125 | 42 | 155 | 35 | 178 | 6 |
| | 150 | 47 | 185 | 40 | 210 | 6 |

| DIN16A DIN盲蓋 | BLANK LINER (DIN 11851) mm | | | | | |
|---|----------------------------|----|-----|-----|----|---|
| | SIZE | A | B | C | D | E |
|  | 10 | 9 | 22 | 18 | 6 | 3 |
| | 15 | 9 | 28 | 24 | 6 | 3 |
| | 20 | 11 | 36 | 30 | 8 | 3 |
| | 25 | 13 | 44 | 35 | 10 | 3 |
| | 32 | 13 | 50 | 41 | 10 | 3 |
| | 40 | 13 | 56 | 48 | 10 | 3 |
| | 50 | 14 | 68 | 61 | 11 | 3 |
| | 65 | 16 | 86 | 79 | 12 | 4 |
| | 80 | 16 | 100 | 93 | 12 | 4 |
| | 100 | 20 | 120 | 114 | 15 | 5 |
| | 125 | 22 | 149 | 137 | 17 | 5 |
| | 150 | 24 | 175 | 163 | 18 | 6 |

| DIN14EB (英制) 焊無牙接頭 | IMPERIAL Weld LINER (DIN 11851) mm | | | | |
|---|------------------------------------|------|-------|-------|------|
| | SIZE | A | B | C | D |
|  | 1" | 22.0 | 25.4 | 44.0 | 22.0 |
| | 1.5" | 26.0 | 38.1 | 56.0 | 34.8 |
| | 2" | 28.0 | 50.8 | 68.0 | 47.5 |
| | 2.5" | 32.0 | 63.5 | 86.0 | 60.2 |
| | 3" | 37.0 | 76.2 | 100.0 | 72.9 |
| | 4" | 44.0 | 101.6 | 120.0 | 97.4 |
| | | | | | |

| DIN15EB (英制) 焊外牙接頭 | IMPERIAL Weld MALE (DIN 11851) mm | | | | |
|---|-----------------------------------|------|-------|----------|------|
| | SIZE | A | B | C | D |
|  | 1" | 29.0 | 25.4 | 52X1/6" | 22.0 |
| | 1.5" | 33.0 | 38.1 | 65X1/6" | 34.8 |
| | 2" | 35.0 | 50.8 | 78X1/6" | 47.5 |
| | 2.5" | 40.0 | 63.5 | 95X1/6" | 60.2 |
| | 3" | 45.0 | 76.2 | 110X1/4" | 72.9 |
| | 4" | 54.0 | 101.6 | 130X1/4" | 97.4 |
| | | | | | |

| DIN14R 擴管無牙接頭 | LINER for EXPANDING (DIN 11851) mm | | | |
|---|------------------------------------|------|-------|-------|
| | SIZE | A | B | C |
|  | 25 | 22.0 | 28.2 | 44.0 |
| | 40 | 26.0 | 40.2 | 56.0 |
| | 50 | 28.0 | 52.2 | 68.5 |
| | 65 | 32.0 | 70.3 | 86.0 |
| | 80 | 37.0 | 85.3 | 100.0 |
| | 100 | 44.0 | 104.3 | 121.0 |
| | | | | |

| DIN15R 擴管外牙接頭 | MALE for EXPANDING (DIN 11851) mm | | | |
|---|-----------------------------------|------|-------|----------|
| | SIZE | A | B | C |
|  | 25 | 29.0 | 28.2 | 52X1/6" |
| | 40 | 33.0 | 40.2 | 65X1/6" |
| | 50 | 35.0 | 52.2 | 78X1/6" |
| | 65 | 40.0 | 70.3 | 95X1/6" |
| | 80 | 45.0 | 85.3 | 110X1/4" |
| | 100 | 54.0 | 104.3 | 130X1/4" |
| | | | | |

玄盛企業股份有限公司
 食品衛生級 不鏽鋼管及管件
 外徑及厚度比較表
 " Outer Diameter & Wall Thickness of the Hygienic Tubings "
 - TECH CONTROL ENTERPRISE CO., LTD.

| 3A | | | IDF | | | RJT/ BSM/ CIP Flat Face | | | DIN 11851 | | | SMS | | |
|---------|------------|-----------|---------|------------|-----------|-------------------------|------------|-----------|-----------|------------|-----------|-----------|-------------|-----------|
| 尺寸 SIZE | 外徑 OD (mm) | 厚度 T (mm) | 尺寸 SIZE | 外徑 OD (mm) | 厚度 T (mm) | 尺寸 SIZE | 外徑 OD (mm) | 厚度 T (mm) | 尺寸 SIZE | 外徑 OD (mm) | 厚度 T (mm) | 尺寸 SIZE | 外徑 OD (mm) | 厚度 T (mm) |
| 1/2" | 12.7 | 1.65 | | | | | | | 10 | 15.0 | 2.5 | | | |
| 3/4" | 19.05 | 1.65 | | | | | | | 15 | 21.0 | 2.5 | | | |
| 1" | 25.4 | 1.65 | 1" | 25.4 | 1.2 | 1" | 25.8 | 1.8 | 20 | 25.0 | 2.5 | 1" | 25.0 | 1.25 |
| 1.25" | 31.75 | 1.65 | | | | | | | 25 | 31.0 | 2.5 | | | |
| 1.5" | 38.1 | 1.65 | 1.5" | 38.1 | 1.2 | 1.5" | 38.5 | 1.8 | 32 | 37.0 | 2.5 | 1.5" | 38.0 | 1.25 |
| | | | | | | | | | 40 | 43.0 | 2.5 | | | |
| 2" | 50.8 | 1.65 | 2" | 50.8 | 1.5 | 2" | 51.2 | 1.8 | 50 | 55.0 | 2.5 | 2" | 51.0 | 1.25 |
| 2.5" | 63.5 | 1.65 | 2.5" | 63.5 | 2.0 | 2.5" | 63.9 | 1.8 | 65 | 72.0 | 3.0 | 2.5" | 63.5 | 1.5 |
| 3" | 76.2 | 1.65 | 3" | 76.2 | 2.0 | 3" | 76.6 | 1.8 | | | | 3" | 76.1 | 1.6 |
| | | | 3.5" | 89.1 | 2.0 | | | | 80 | 87.0 | 3.0 | | | |
| 4" | 101.6 | 2.1 | 4" | 101.6 | 2.0 | 4" | 102.0 | 2.2 | 100 | 106.0 | 3.0 | 4" / 4"EB | 101.6 / 104 | 2.0 / 2.0 |
| | | | 4.5" | 114.3 | 3.0 | | | | | | | | | |
| | | | | | | | | | 125 | 132.0 | 3.5 | | | |
| | | | | | | | | | | | | | | |
| 6" | 152.4 | 2.8 | | | | 6" | 152.8 | 2.2 | 150 | 157.0 | 3.5 | | | |
| | | | | | | | | | | | | | | |
| 8" | 203.2 | 2.8 | | | | | | | | | | | | |
| 10" | 254.0 | 3.47 | | | | | | | | | | | | |
| 12" | 304.8 | 3.47 | | | | | | | | | | | | |

表面處理參考表

| Surface Finish Cross Reference | | |
|--------------------------------|-----------|---------|
| Grit No. | Ra (µin.) | Ra (µm) |
| 120 | | |
| 180 | 32 | 0.8 |
| 240 | 25 | 0.6 |
| 320 | 20 | 0.5 |

玄盛企業股份有限公司 食品衛生級 墊片材料特性 比較表

" Gasket Material Selection Guide / Gasket Material Characteristics Comparison Chart " - TECH CONTROL ENTERPRISE CO., LTD.

| 墊片材料特性 Gasket Material Characteristics | SILICONE | EPDM | VITON (FKM) | TEFLON (PTFE) | BUNA-N |
|---|----------------------------|-------------------------|---------------------------|---|---|
| 建議操作溫度 Recommend Operating Temperature | -30°C~120°C | -30°C~100°C | -15°C~120°C | -30°C~160°C | -10°C~100°C |
| 耐酸鹼度 Acid/Alkali Resistance | 一般 Fair | 一般 Fair | 良 Good | 優 Excellent | 一般 Fair |
| 耐臭氧度 Ozone Resistance | 一般 Fair | 優 Excellent | 一般 Fair | 一般 Fair | 差 Poor |
| 顏色 Color | 白色半透明 Translucent White | 黑 Black | 黑 Black | 白 White | 原色為淺褐色, 可訂製為白色 Original color is light brown, customizable to white |
| 其它備註事項 Other Comments | 耐高溫 heat resistant | 耐臭氧 Ozone resistance | 耐酒精 alcohol resistance | 耐酸鹼及溶劑 acid, alkali, and solvent resistant, 硬 hard | 耐油 oil resistance |



玄盛企業股份有限公司

專業製造 食品衛生級 不鏽鋼管、管件、閥、泵浦
CNC金屬加工、產業機械設備金屬零件代工製造



www.tech-control-tw.com

TECH CONTROL ENTERPRISE CO., LTD.

techcontrol@seed.net.tw

●不鏽鋼 食品衛生級 夾接管件、對焊管件、擴管管件 3A、IDF、RJT/BSM/CIP Flat Face、DIN 11851、SMS
Tri-Clamp / Bevel Seat / Butt Weld / Roll-On Expanding HYGIENIC TUBE FITTINGS



Tri-Clamp接頭/夾盤(Ferrule)、盲蓋(Blank)
管夾/夾帶/卡箍(Clamp)、軟管接頭(Hose Barb)
45°、90° 彎頭(Elbow)、大小頭(Reducer)
三通(Tee)、平口三通、十字通(Cross)
管架/管束(Support & Hanger)、食品級墊片
Silicone、EPDM、Viton、Teflon、Buna-N

Strainer & Filter 過濾器

Sight Glass 玻璃視窗

Sight Liquid Level Gauge 液位計

Sampling Valve 取樣閥

CIP Cleaning Spray Ball CIP清洗球

Rotary Spray Ball 旋轉噴球



●不鏽鋼 食品衛生級 手動/氣動 各式閥件 Manual / Pneumatic HYGIENIC VALVES

蝶閥(Butterfly Valve)、考克閥(Plug Valve)、逆止閥(Check Valve)、球閥(Ball Valve)、座閥(Seat Valve)
換向閥(Divert Valve)、截止閥(Shut-Off Valve)、隔膜閥(Diaphragm Valve)、桶底閥(Tank Flush Valve)

接口: 3A Tri-Clamp夾式(Ferrule Ends)、焊式(Weld Ends)、IDF、RJT/BSM/CIP Flat Face、DIN 11851、SMS

尺寸: 1"、1.5"、2"、2.5"、3"、4"

耐壓: 水壓 10 kg/cm² (142 psi at 30° C / 86° F)



●不鏽鋼 食品衛生級 離心式泵浦 CIP HYGIENIC CENTRIFUGAL PUMPS ●不鏽鋼管 HYGIENIC TUBES ASTM A270

●產業機械設備金屬零件代工製造 OEM / CUSTOM METAL PARTS for Machinery & Equipment



22055 新北市 板橋區 倉後街 24 號 1 樓 No.24, Tsang Hou St., BanQiao Dist., New Taipei City 22055, TAIWAN
TEL: (02) 2968-5577 / 2967-5553 FAX: (02) 2967-5545 / 2968-9740

統一編號: 22780634

TECH CONTROL ENTERPRISE CO., LTD.
is a Member of TAITRA