



玄盛企業股份有限公司

專業製造 食品衛生級 不鏽鋼管、管件、閥、泵浦

CNC金屬加工、產業機械設備金屬零件代工製造



dun & bradstreet
D-U-N-S® CERTIFIED
65 - 736 - 5078

www.tech-control-tw.com

TECH CONTROL ENTERPRISE CO., LTD.

techcontrol@seed.net.tw

●不鏽鋼 食品衛生級 管束 (管夾)

重型管束、中型管束、輕型管束、高壓管束

●Stainless Steel Hygienic Tube Fittings, **CLAMP**

Heavy Duty Clamp, Middle Duty Clamp, Light Duty Clamp, High Pressure Clamp

尺寸 Size : 1/2" 3/4" 7/8" X 1/2" 7/8" X 3/4" 1" 1.25" 1.5" 2" 2.5" 3" 4" 6" 8" 10" 12"

材質 Material : SS304,

型式 Type : Single Pin, Double Pin, 3-Segment, Bolted, Quick Release, I-LINE, Q-LINE, ... etc.

商品特點 Features :

材料為經過 Olympus Innov-X Delta XRF Metal Analyzer 金屬材質檢驗機 嚴格把關
Materials are rigorously inspected by using the Olympus Innov-X Delta XRF Metal Analyzer

精密脫蠟鑄造 堅固耐用抗銹蝕
Precision Investment Casting, Sturdy, Durable, and Corrosion-Resistant.

振盪拋光表面處理, 表面光滑無毛邊
Tumble finishing surface treatment results in a smooth surface without burrs."

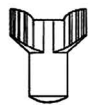
出貨前 100% 檢驗
100% inspection before shipment



FERRULE Clamps

如未指定, 出貨時 管束之翼型螺母 皆附上 如圖所示之 802翼型螺母.

If not specified, wing nuts provided with clamps in the shipment will all be equipped with the 802 wing nuts as shown in the diagram.



802



1005



1251



1334



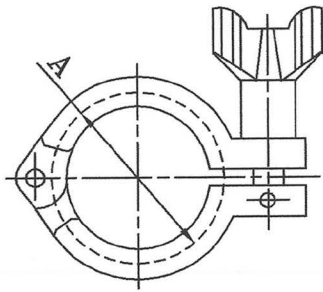
1994



Wing Nut 1334 和 1994 只適用於
1/2" 和 3/4" 管束.

Wing Nut 1334 & 1994 are for
1/2" & 3/4" only.

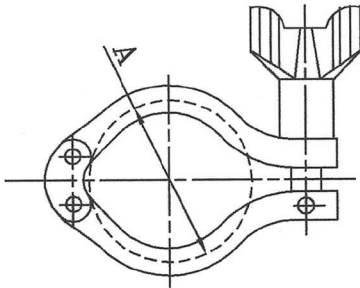
13LAH 單鉚釘 重型管束



Heavy Duty Clamp SINGLE PIN Wingnut Tightened mm

SIZE	φA	
1/2~3/4"	28.5	
7/8"	37.2	
1~1 1/2"	53.6	
2"	67.0	
2 1/2"	80.6	
3"	94.0	
3 1/2"	108.3	
4"	122.0	
4 1/2"	133.7	
5"	148.1	
6"	169.6	
8"	220.9	
10"	271.7	
12"	323.4	

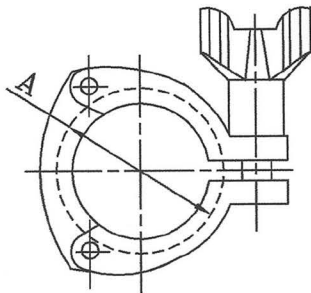
13MHM 雙鉚釘 重型管束



Heavy Duty Clamp DOUBLE PIN Wingnut Tightened mm

SIZE	φA	
1~1 1/2"	53.6	
2"	67.0	
2 1/2"	80.6	
3"	94.0	
3 1/2"	108.3	
4"	122.0	

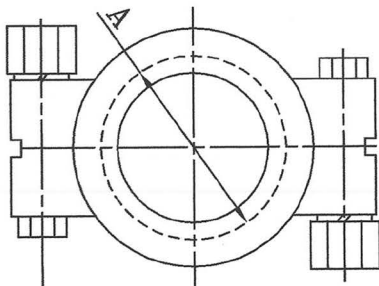
13MHHS 三片式管束



3-SEGMENT Clamp Wingnut Tightened mm

SIZE	φA	
1~1 1/2"	53.9	
2"	67.4	
2 1/2"	80.9	
3"	94.4	
4"	122.4	
12"	323.4	

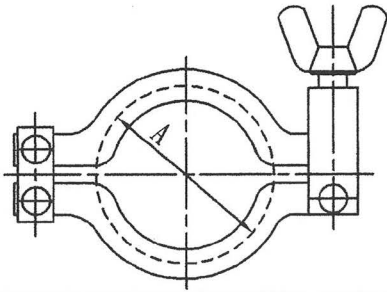
13MHP 高壓管束 (螺栓固定)



HIGHT PRESSURE BOLTED Clamp mm

SIZE	φA	
1~1 1/2"	51.9	
2"	65.5	
2 1/2"	79.0	
3"	92.5	
4"	120.5	
6"	168.5	

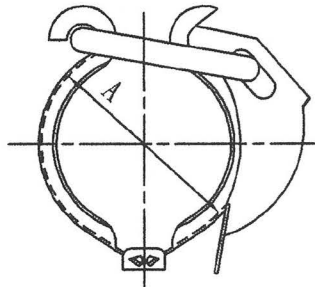
13MAH 快拆 中型管束



QUICK RELEASE Clamp DOUBLE PIN Wingnut Tightened mm

SIZE	A	
1~1/2"	54.4	
2"	66.5	
2 1/2"	79.8	
3"	93.3	
3 1/2"	109.0	

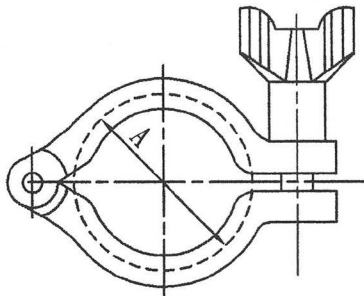
13HLA 栓扣式 輕型管束



LIGHT DUTY TOGGLE Clamp mm

SIZE	A	
1~1/2"	54.4	
2"	66.5	
2 1/2"	79.8	
3"	93.3	
4"	121.3	

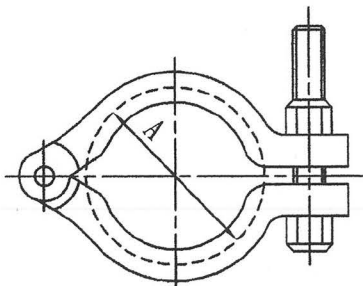
13JO 單鉚釘管束



Heavy Duty Clamp SINGLE PIN Wingnut Tightened mm

SIZE	A	
1~1/2"	63.4	
2"	75.4	
2 1/2"	91.2	
3"	105.6	
4"	129.8	

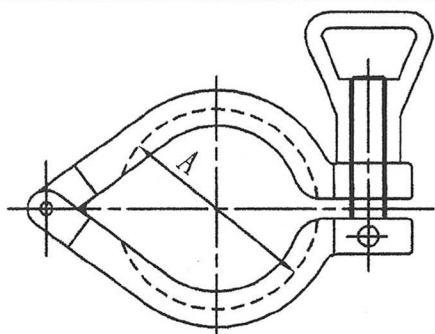
13U 單鉚釘管束 (螺栓固定)



Heavy Duty Clamp SINGLE PIN BOLT Tightened mm

SIZE	A	
1~1/2"	63.4	
2"	75.4	
2 1/2"	91.2	
3"	105.6	
4"	129.8	

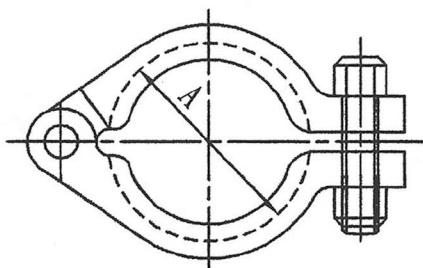
13IS I-LINE / Q-LINE管束



I-LINE / Q-LINE Clamp SINGLE PIN Wingnut Tightened mm

SIZE	A	
1~1 1/2"	54.0	
2"	71.4	
2 1/2"	88.9	
3"	103.2	
4"	127.0	

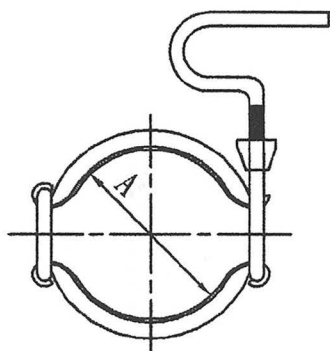
13I I-LINE管束 (螺栓固定)



I-LINE Clamp SINGLE PIN BOLT Tightened mm

SIZE	A	
1/2~3/4"	41.3	
1~1 1/2"	54.0	
2"	71.4	
2 1/2"	88.9	
3"	103.2	
4"	127.0	
6"	195.3	
8"	246.0	

13QT Q-LINE輕型管束



Q-LINE Light Weight Clamp mm

SIZE	A	
1~1 1/2"	55.6	
2"	71.4	
2 1/2"	88.9	
3"	103.2	
4"	128.0	



玄盛企業股份有限公司

專業製造 食品衛生級 不鏽鋼管、管件、閥、泵浦
CNC金屬加工、產業機械設備金屬零件代工製造



dun & bradstreet
D-U-N-S® CERTIFIED
65-736-5078

www.tech-control-tw.com

TECH CONTROL ENTERPRISE CO., LTD.

techcontrol@seed.net.tw

- 不鏽鋼 食品衛生級 夾接管件、對焊管件、擴管管件 3A、IDF、RJT/BSM/CIP Flat Face、DIN 11851、SMS Tri-Clamp / Bevel Seat / Butt Weld / Roll-On Expanding HYGIENIC TUBE FITTINGS



Tri-Clamp接頭/夾盤(Ferrule)、盲蓋(Blank)
管夾/夾帶/卡箍(Clamp)、軟管接頭(Hose Barb)
45°、90° 彎頭(Elbow)、大小頭(Reducer)
三通(Tee)、平口三通、十字通(Cross)
管架/管束(Support & Hanger)、食品級墊片
Silicone、EPDM、Viton、Teflon、Buna-N

Strainer & Filter 過濾器

Sight Glass 玻璃視窗

Sight Liquid Level Gauge 液位計

Sampling Valve 取樣閥

CIP Cleaning Spray Ball CIP清洗球

Rotary Spray Ball 旋轉噴球



- 不鏽鋼 食品衛生級 手動/氣動 各式閥件 Manual / Pneumatic HYGIENIC VALVES

蝶閥(Butterfly Valve)、考克閥(Plug Valve)、逆止閥(Check Valve)、球閥(Ball Valve)、座閥(Seat Valve)
換向閥(Divert Valve)、截止閥(Shut-Off Valve)、隔膜閥(Diaphragm Valve)、桶底閥(Tank Flush Valve)

接口: 3A Tri-Clamp夾式(Ferrule Ends)、焊式(Weld Ends)、IDF、RJT/BSM/CIP Flat Face、DIN 11851、SMS

尺寸: 1"、1.5"、2"、2.5"、3"、4"

耐壓: 水壓 10 kg/cm² (142 psi at 30° C / 86° F)



- 不鏽鋼 食品衛生級 離心式泵浦 CIP HYGIENIC CENTRIFUGAL PUMPS ●不鏽鋼管 HYGIENIC TUBES ASTM A270

- 產業機械設備金屬零件代工製造 OEM / CUSTOM METAL PARTS for Machinery & Equipment



22055 新北市 板橋區 倉後街 24 號 1 樓 No.24, Tsang Hou St., BanQiao Dist., New Taipei City 22055, TAIWAN
TEL: (02) 2968-5577 / 2967-5553 FAX: (02) 2967-5545 / 2968-9740

統一編號: 22780634

TECH CONTROL ENTERPRISE CO., LTD.
is a Member of TAITRA